



Case Study

MEXICO
Carlos A. Parra,
Xpert Stone

Stone/Tile: Mexican Cantera and Saltillo

Product: STAIN-PROOF™ and ENHANCE PLUS™

Project Completed: 2009



The Project

The project required the rejuvenation and sealing of the highly porous Mexican Cantera and Saltillo tiles at a beach front property in Mexico. The Mexican Cantera and Saltillo tiles were faded with signs of salt-efflorescence over the entire area. The salt-efflorescence was caused by water being able to move freely through the material. Water carries dissolved minerals which can be deposited on the surface when the water evaporates, leaving visible white patches.

The owners wanted to rejuvenate the faded look of the tiles and seal the surface to prevent stains and salt-efflorescence from quickly returning. Carlos A. Parra from **Xpert Stone** was hired to rejuvenate the faded look of the tiles and to protect the tiles from future salt-efflorescence that caused the faded appearance of the surface.

Special Requirements

1. A sealer that can restore the faded appearance of the surface and enhance the surface's natural appearance.
2. A sealer was required to protect the Cantera and Saltillo tiles from water- and oil-based staining.
3. Due to the proximity to the coastal line the sealer must also provide effective long term protection from salt-efflorescence.
4. Slip resistance of the surface must not be altered.

White patches of salt-efflorescence and faded appearance of surface:



The Dry-Treat Solution

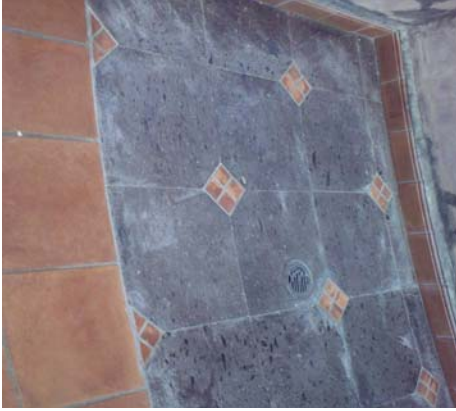
Dry-Treat's impregnating sealers are technologically different from common impregnators and were chosen as the only products able to meet all the requirements for the project. Specially engineered molecules in STAIN-PROOF™ penetrate very deeply and form proper permanent chemical bonds inside the material without affecting its breathe-ability or slip-resistance. The extra deep, permanent STAIN-PROOF™ liquid- and oil- repelling barrier protects against staining and other serious types of damage such as salt efflorescence, water damage and freeze-thaw damage. The substantial liquid repellent barrier keeps water and damaging salts well away from the visible surface of the stone.

Dry-Treat's breathable semi-surface treatment, ENHANCE-PLUS™, provides a long lasting enrichment of natural colour; hides scratches; efflorescence and imperfections; as well as provides the surface with protection from water-based stains to make the surface easier to clean.

Xpert Stone specialist sealing expertise removed the existing staining and salt-efflorescence, before applying two coats of ENHANCE-PLUS™ to rejuvenate the faded appearance of the surface. Once the desired appearance was achieved the surface was left to cure for 24 hours. After the surface was completely cured, two coats of STAIN-PROOF™ were applied over the surface. By creating a deep dry barrier, STAIN-PROOF™ will continue to protect against future salt efflorescence and staining, whilst ENHANCE-PLUS™ will provide long lasting colour enrichment of the Cantera and Saltillo tiles.

Project Snap-Shots

Before



After

